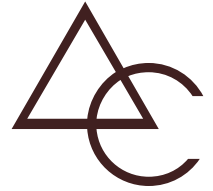




CAPTIVA



CAPTIVA AC / SOLID MDF DOOR COLLECTION



CAPTIVA

CAPTIVA CUSTOM DOORS ARE SYNONYMOUS WITH QUALITY MATERIAL AND CRAFTSMANSHIP. WITH NORTH ATLANTIC'S PARTNERSHIP WITH ARCHITECTURAL CONCEPTS, WE HAVE EXPANDED OUR PRODUCT LINE TO INCLUDE A HIGH-QUALITY SOLID MDF DOOR AS AN ALTERNATIVE TO ALL-WOOD OR MDF-SKIN INTERIOR DOORS. ALLOW YOURSELF TO BE CAPTIVATED WITH CAPTIVA AC, OUR NEW LINE OF CUSTOM INTERIOR SOLID MDF DOORS.



ARCHITECTURAL CONCEPTS (AC) WAS FOUNDED IN 2007 BY SCOTT COLBY AND JOSH MORGAN. THEIR BREADTH OF EXPERIENCE COMES FROM DIFFERENT BUILDING PRODUCT MARKET SECTORS, PROVIDING BROAD-BASED, IN-HOUSE EXPERTISE IN THE COMMERCIAL ARENA, WITH CORE INSIGHT ON DOORS, FRAMES, HARDWARE, ARCHITECTURAL METALS, SHOWER ENCLOSURES AND GLAZING PRODUCTS.

Captiva AC / Architectural Concepts Series

CONSTRUCTION	Solid MDF Stile and Rail
PANEL THICKNESS	1/2" - 1-3/8"
DESIGN OPTIONS	Unlimited
GLASS OPTIONS	Unlimited
FINISHING OPTIONS	High Quality Primer with AC Factory Finish
FIRE RATING	20, 45, 60, or 90 minute
STC RATING	32 - 35
PRICE	\$\$\$\$
UTILITY	Custom, larger residential and commercial interior packages



Table of contents

Choosing Your Door	1
Door Construction	2-3
Prefinishing	4
Panel and Sticking Options	5-7
Panel Doors	8-12
Glass Door Options	13-15
Glass Doors	16-18
Panel Lite Doors	19-21
Modern Collection	24-25
Grooved and Beaded Doors	22-23
Louver Doors	24
Flush Doors	25-26
Tambour Doors	27
Fire Rated Doors	28
Wood Frames and Jambs	29
STC Ratings	30
Hardware	31
Barn Door Hardware	32



Made in U.S.A.

Captiva Custom Wood Doors, Custom MDF Doors,
and AC Solid MDF Doors are manufactured in the USA.

Choosing the right door made easy

WHEN IT COMES TO SELECTING THE RIGHT DOOR FOR YOUR PROJECT, WE'RE WITH YOU EVERY STEP OF THE WAY. WE PRIDE OURSELVES ON CREATING DOORS THAT MATCH YOUR DESIGN VISION, MAKE FUNCTIONAL SENSE FOR YOUR SPACE AND FALL WITHIN YOUR BUDGET.

1. Choose Door Style
2. Choose Door Details:
Sticking Profile, Panel Option, Glass Option or Mirror
3. Choose Application:
Barn Door, Swing Door or Pair



A500
Square Sticking (SS)
F Panel (F)
AC9000B Hardware
ACMO6312 Pull



A300
Square Sticking (SS)
White Lami Glass
ACCL80 Sliding Hardware
AC5310 Pull

What is the right door for the opening?

We understand the different needs of every door opening. We'll help you recognize issues of durability for those high traffic areas, considerations of functionality for the given space, and the style demanded by your design and the aesthetics of the environment.

MDF



MDF (Medium Density Fiberboard) is a smart choice for many of your interior door needs. Not only are MDF doors stable, durable and environmentally friendly, but our super-refined MDF doors provide a remarkably smooth finish and outperform natural wood doors for painted applications.

Because of their homogeneous construction, MDF doors are more durable and resist warping, cracking and splitting. MDF allows us to build more stable and architecturally correct doors and details.

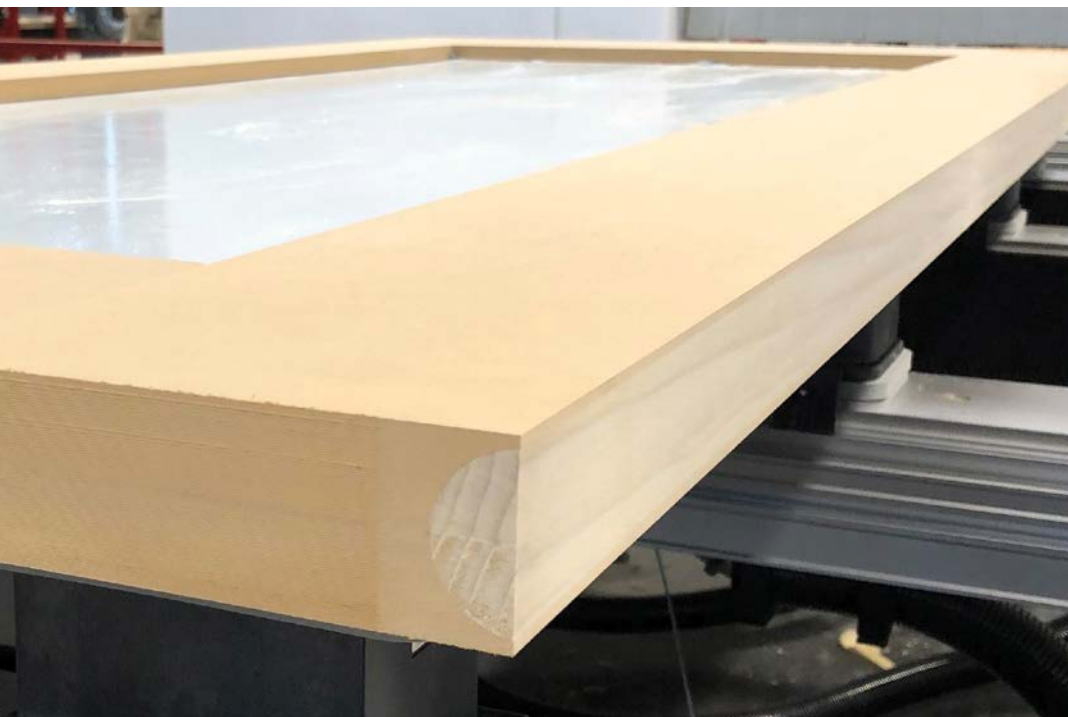
MDF is an engineered wood product made from recycled and recovered wood fiber. Rest assured, we do not fill our MDF products with cheaper core materials (like many alternatives), and we never use low-density fiberboard.

All our MDF is CARB2* compliant and NAUF** MDF is available on request.

* California Air Resources Board

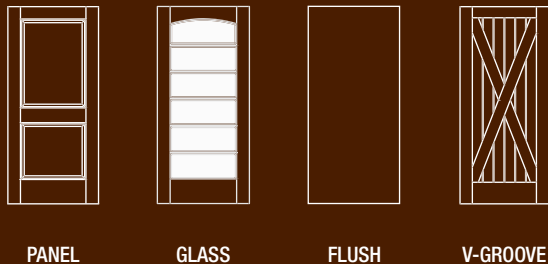
** No Added Urea Formaldehyde Medium Density Fiberboard

Superior structural wood edge



MDF holds screws well through the face, but not as well through the edge. We have worked diligently on designing a wood edge that provides a complete glue bond, without any gaps, increasing the structural rigidity of the door. Our wood edge will accept all of your hardware with ease.

Door style



From panel doors to barn doors, the wide selection available from Captiva AC is sure to match your design vision and bring high-quality craftsmanship to your space.

Primer

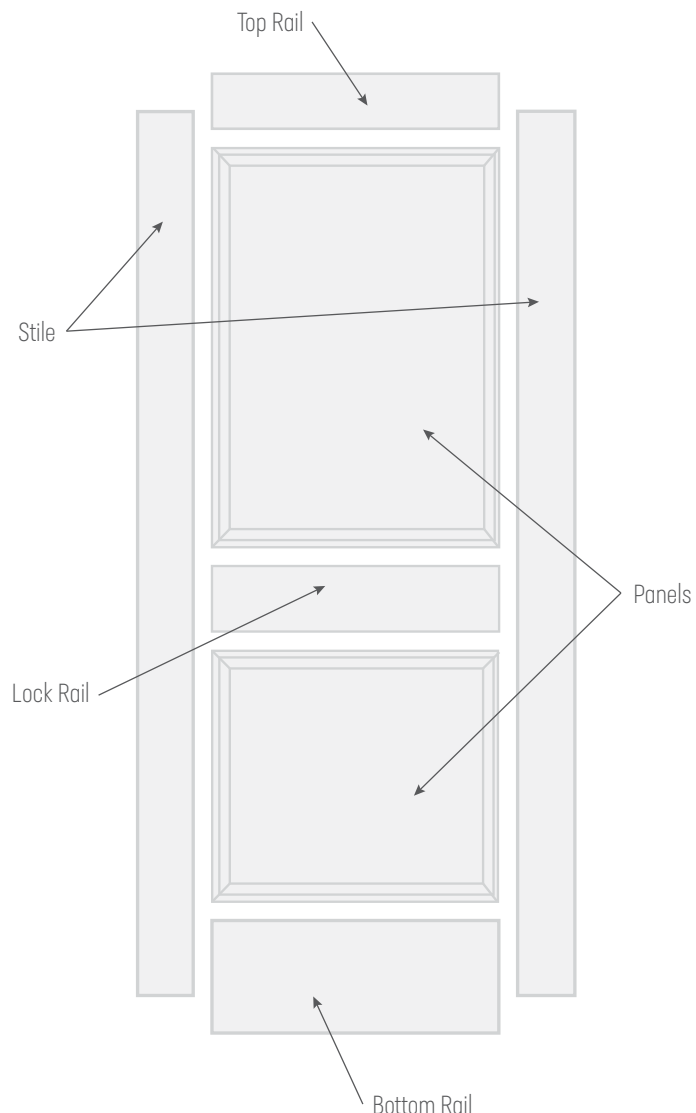
Captiva AC uses a high end, high build, WDMA primer on all our doors. This is an acrylic latex primer intended for priming interior and approved exterior MDF and composite substrates. This product dries fast, sands easily and will fill open grain woods and MDF with little or no fiber raise. Works with any type of topcoat: Latex, Oil, Acrylic and Lacquer.

Machining

With state of the art CNC Machinery, doors can be prepped for any type of hardware.

Stile & rail

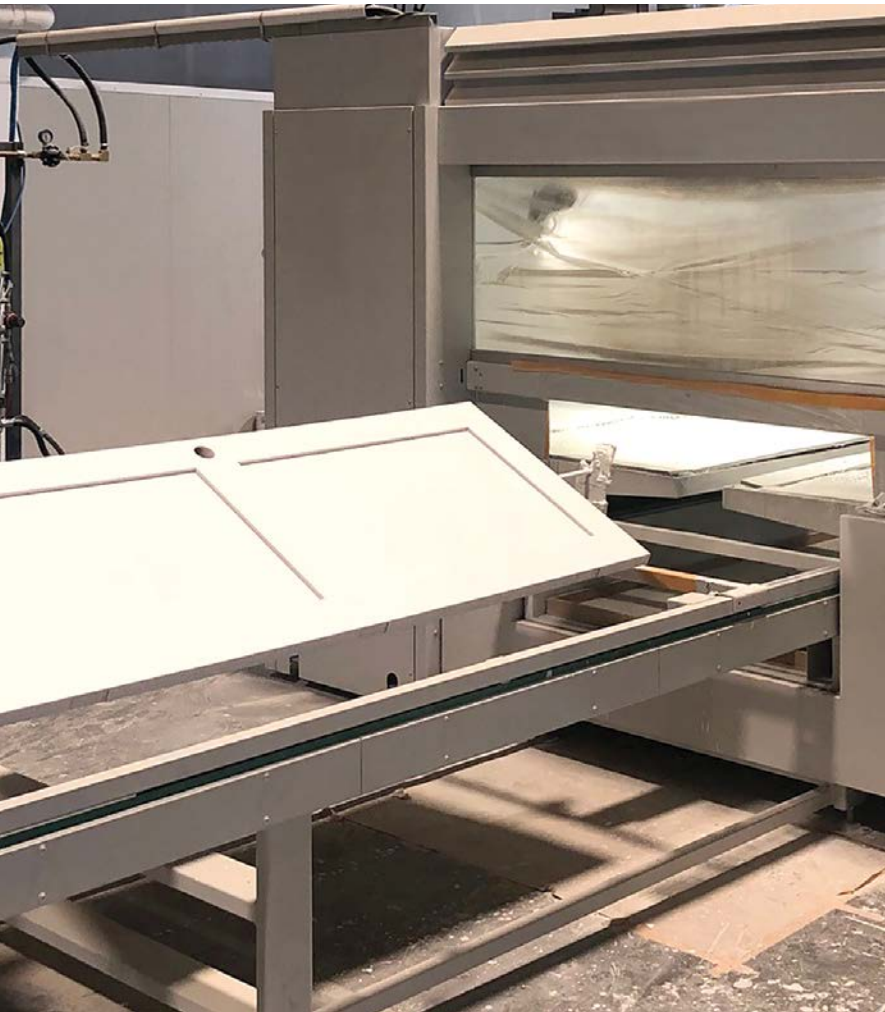
Captiva AC stile and rail doors allow us to craft virtually any style of door while bringing a high level of craftsmanship and quality to our clients. With meticulous construction and the use of premium materials (that exceed industry standards), these stile and rail doors provide sharper corners, better depth and more stability than other comparable doors.



Prefinished top coat

We can prefinish your MDF door with our unique, waterborne Polyurethane and Acrylic topcoat. As a value-added service, this waterborne sealant is designed for use as a self-sealing topcoat. A strong build providing a durable finish with very good hardness and chemical resistance compared to traditional acrylic latex and Nitrocellulose finishes.

Our topcoat meets or exceeds KCMA test requirements for finishes and is low VOC and UL GREENGUARD Gold Certified for low chemical emissions. We can accommodate all gloss ranges and can be toned to almost any color. Please ask your customer service representative for more information on pricing and lead times.

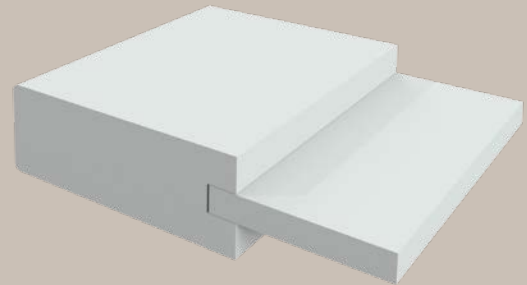


A202
Square Sticking (SS)
F Panel (F)

Panel doors

The distinctive look of every panel door is in the profile. The door profile is defined by the joints where the sticking and panels come together and the styles of each. Choose from over 45 combinations of sticking and panel styles to achieve the perfect profile look for your project, or we can help you create a custom solution.

Each of our panel doors are built with authentic stile-and-rail construction for architecturally correct results. You can choose from diverse panel door styles in configurations from one to nine panels.



Custom A300
Square Sticking (SS)
Flat Panel (F)
Custom plant on Moldings

Sticking options

Sticking is the pattern cut into the interior edges of every stile and rail – and is an essential component in your door's overall style. Stiles and rails are the vertical and horizontal wood pieces that create the frame of a panel door.



ROMAN OGEE (OG)



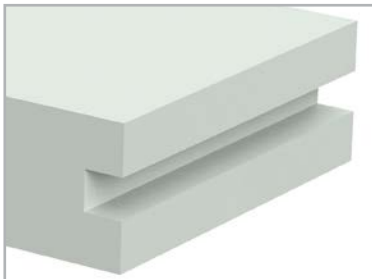
ONE STEP (OS)



COVE & BEAD (CB)



BEVEL (BV)



SQUARE STICK (SS)



QUARTER BEAD (QB)

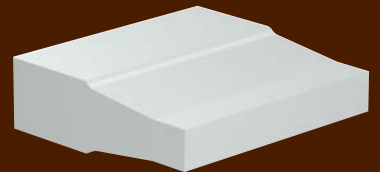


QUARTER ROUND (QR)

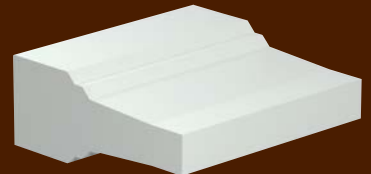
Panel options

We offer various panel styles that work with the sticking to complete the style of your door's distinctive profile. You can work with our experts to find a profile that is both unique, attractive and matches your planned design aesthetic.

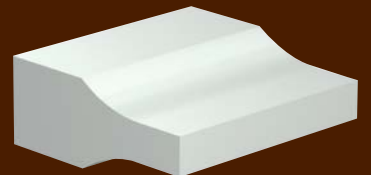
RAISED (R)



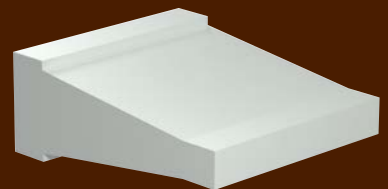
DOUBLE HIP (D)



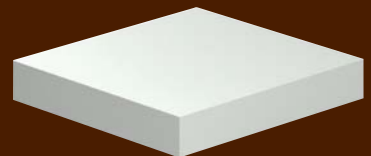
SCOOP (S)



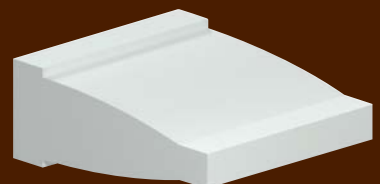
JUNIOR BEVEL (JR)



FLAT (F)

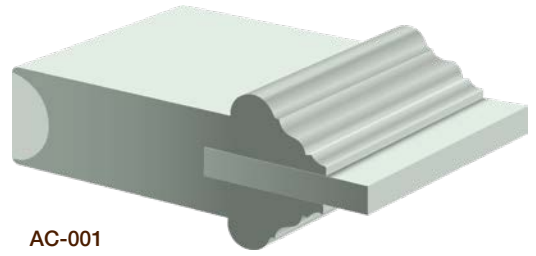


SENIOR RAISED (SR)

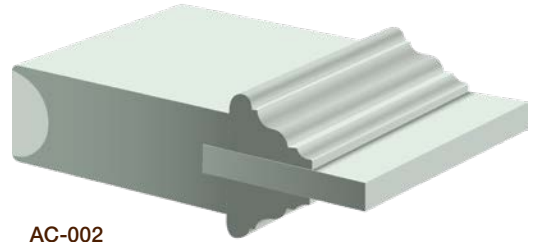


Raised moulding

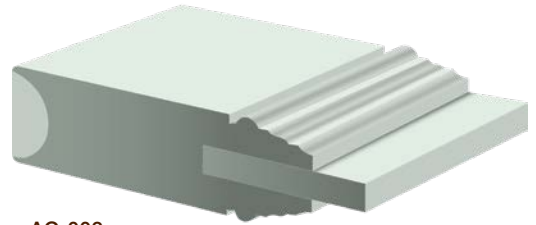
We have a wide selection of decorative applied mouldings that can be applied to your doors. If you don't see what you want, send us a sketch and we can build it.



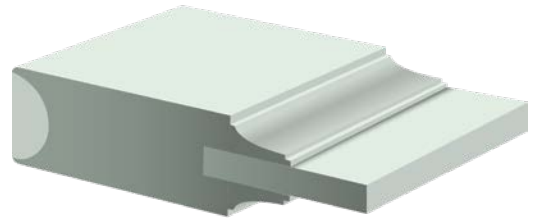
AC-001



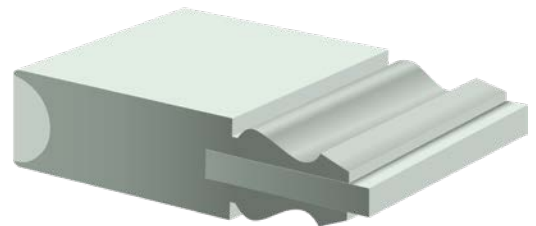
AC-002



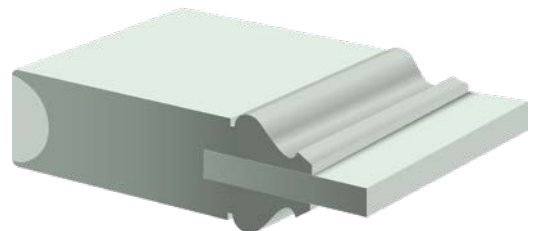
AC-003



AC-004



AC-005



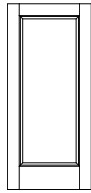
AC-006



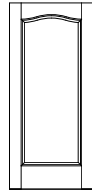
CAPTIVA

Captiva AC / Architectural Concepts Series

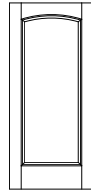
Panel doors



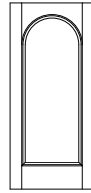
A100



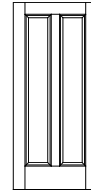
A101



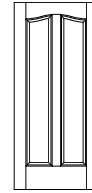
A103



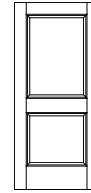
A105



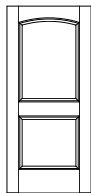
A200



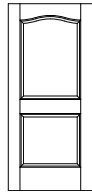
A201



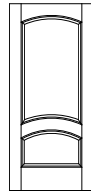
A202



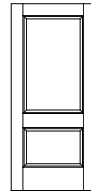
A203



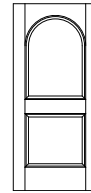
A204



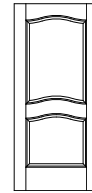
A205



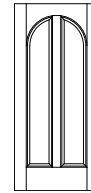
A206



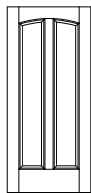
A207



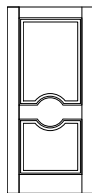
A208



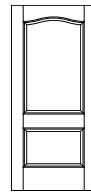
A209



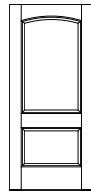
A213



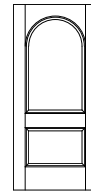
A216



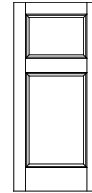
A217



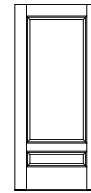
A218



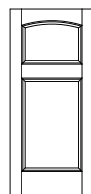
A219



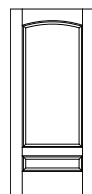
A220



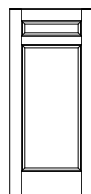
A221



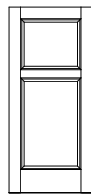
A222



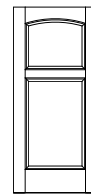
A223



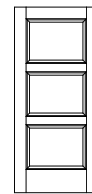
A224



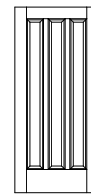
A225



A226



A300



A301

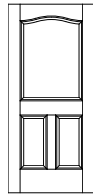
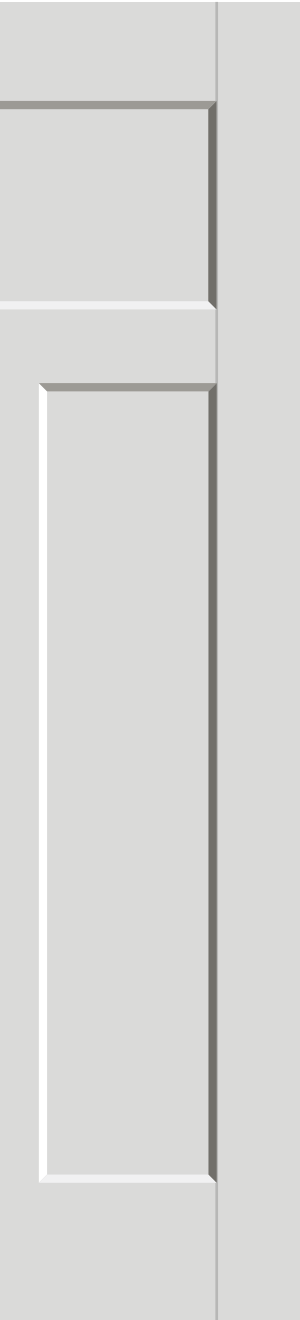




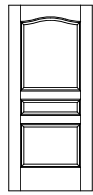
CAPTIVA

Captiva AC / Architectural Concepts Series

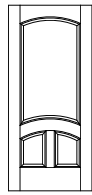
Panel doors



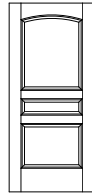
A302



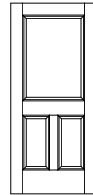
A303



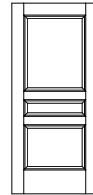
A304



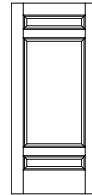
A305



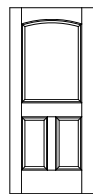
A306



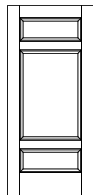
A307



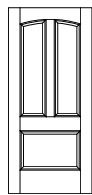
A308



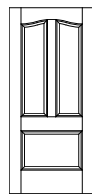
A309



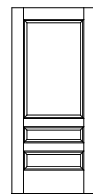
A310



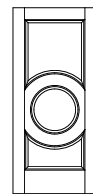
A311



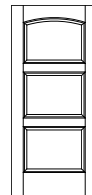
A312



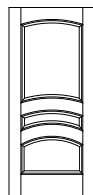
A313



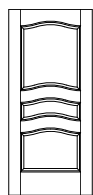
A314



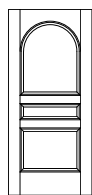
A315



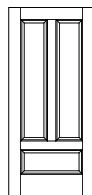
A316



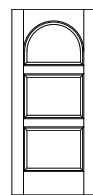
A317



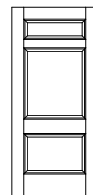
A318



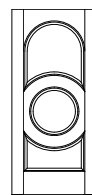
A319



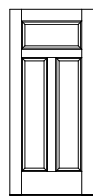
A321



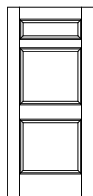
A322



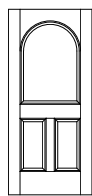
A323



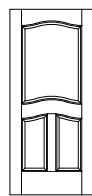
A324



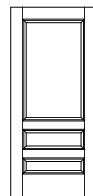
A325



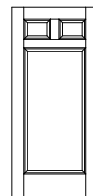
A326



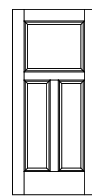
A327



A328



A329



A330

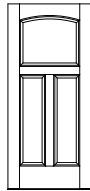




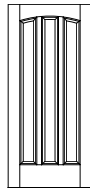
CAPTIVA

Captiva AC / Architectural Concepts Series

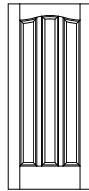
Panel doors



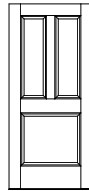
A331



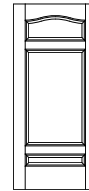
A332



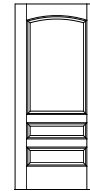
A333



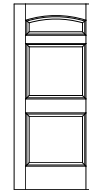
A334



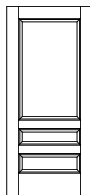
A335



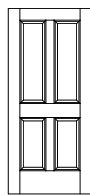
A336



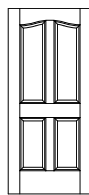
A337



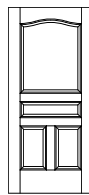
A338



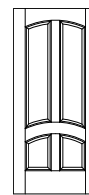
A400



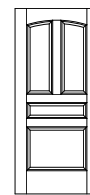
A401



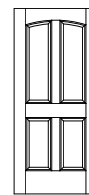
A402



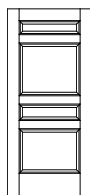
A403



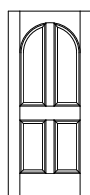
A404



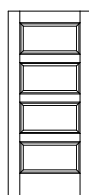
A405



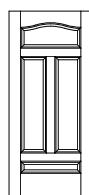
A406



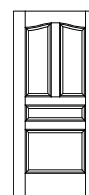
A407



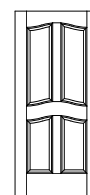
A410



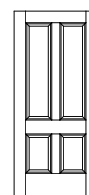
A411



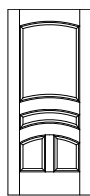
A412



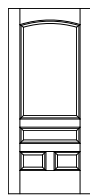
A413



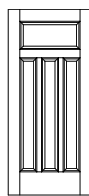
A414



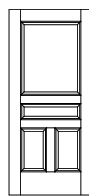
A415



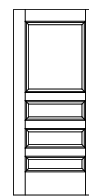
A417



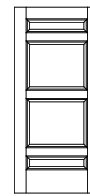
A419



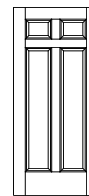
A420



A421



A422



A423

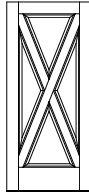
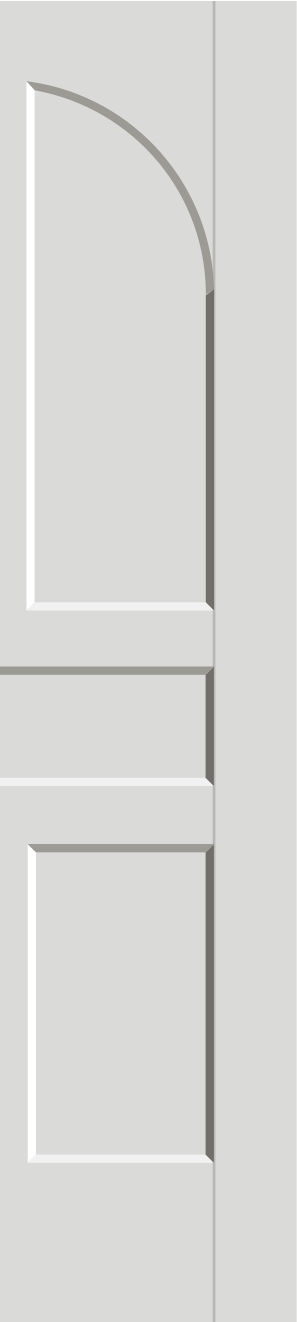




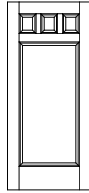
CAPTIVA

Captiva AC / Architectural Concepts Series

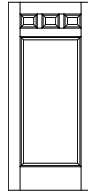
Panel doors



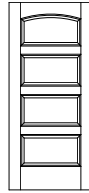
A424



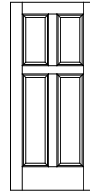
A425



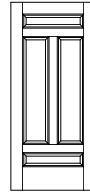
A426



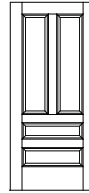
A427



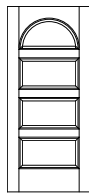
A428



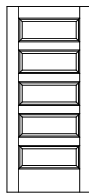
A429



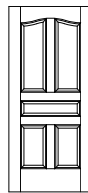
A430



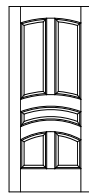
A431



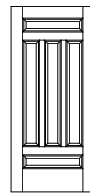
A500



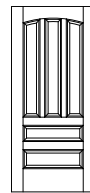
A501



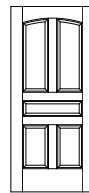
A502



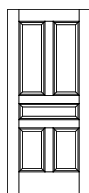
A503



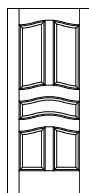
A504



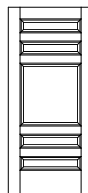
A505



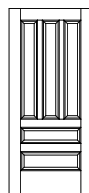
A506



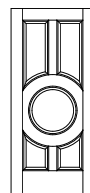
A507



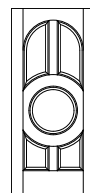
A508



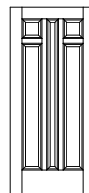
A509



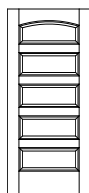
A510



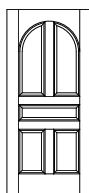
A511



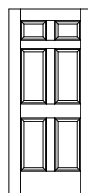
A512



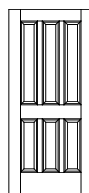
A513



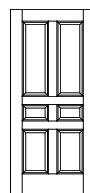
A514



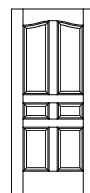
A600



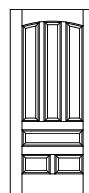
A601



A602



A603



A604

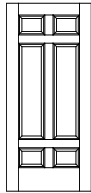
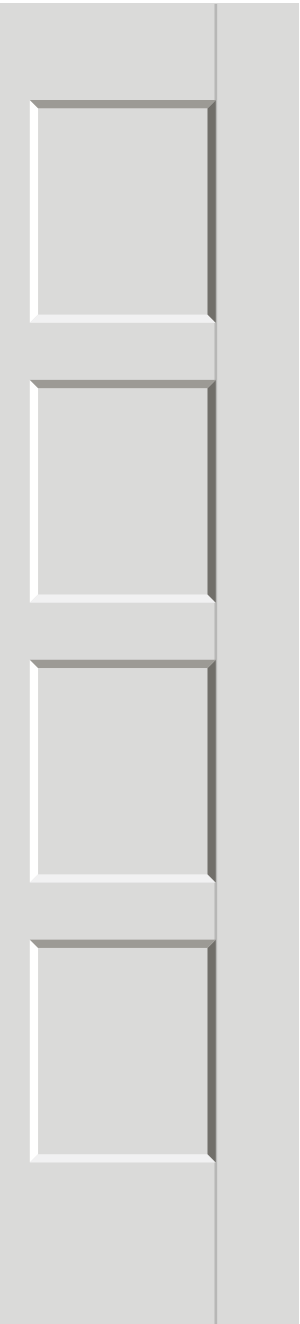




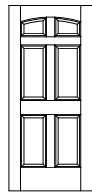
CAPTIVA

Captiva AC / Architectural Concepts Series

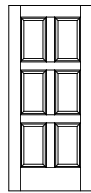
Panel doors



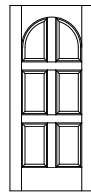
A605



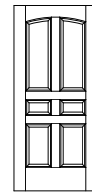
A607



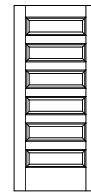
A608



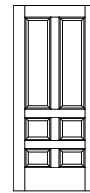
A609



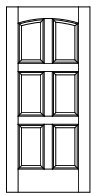
A610



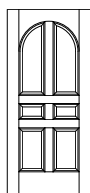
A611



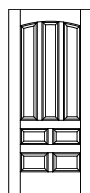
A612



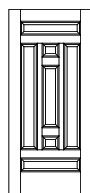
A613



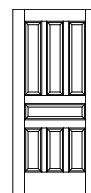
A614



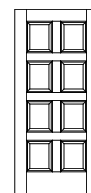
A700



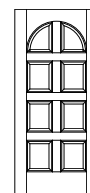
A701



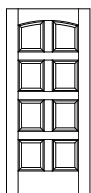
A702



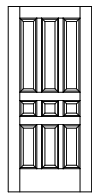
A800



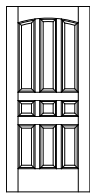
A801



A802



A900

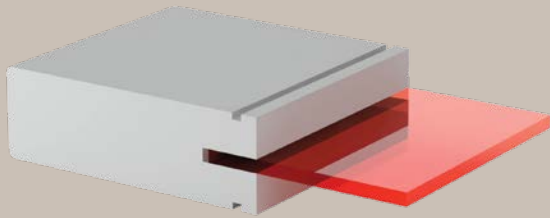


A901



Glass doors

CONSTRUCTED WITH OLD-WORLD CRAFTSMANSHIP, OUR GLASS DOORS ENHANCE ALMOST ANY SPACE. WHETHER YOU'RE DESIGNING FOR AN ELEGANT ENTRANCE OR A MORE INTIMATE SPACE, OUR EXPERTS CAN HELP YOU SELECT THE DOOR TYPE AND GLASS PANELS THAT PROVIDE JUST THE RIGHT BALANCE OF NATURAL LIGHT, PRIVACY AND STYLE.

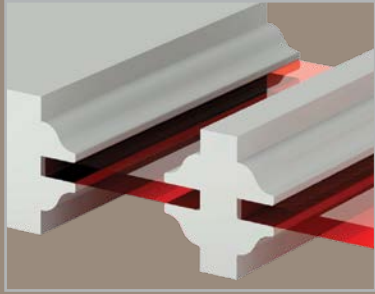


**QUIRK MOULDING
COMPRESSION FIT (QM)**

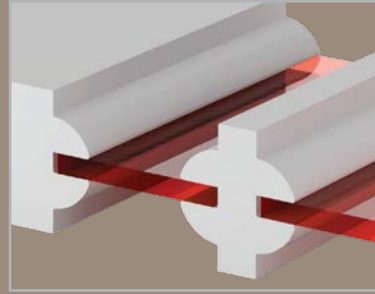


**G100
Quirk Moulding (SS)
1/4" White Lami**

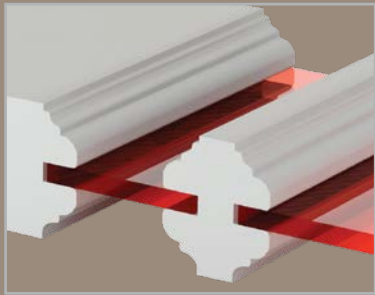
Glass door profile options



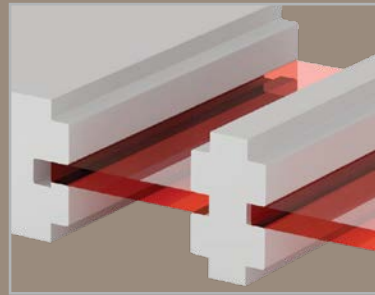
ROMAN OGEE SASH (OG)



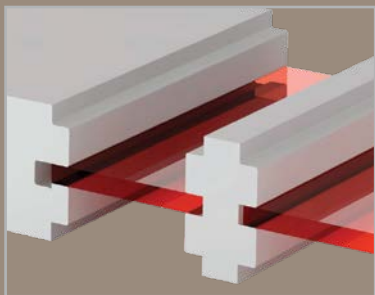
QUARTER ROUND SASH (QR)



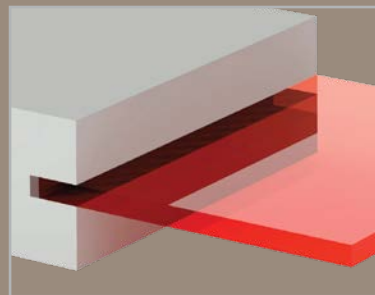
COVE & BEAD SASH (CB)



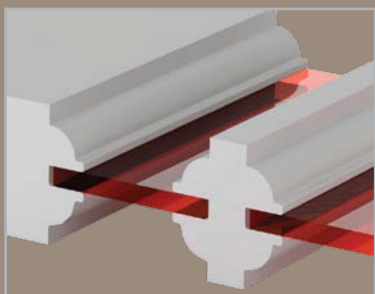
ONE STEP SASH (OS)



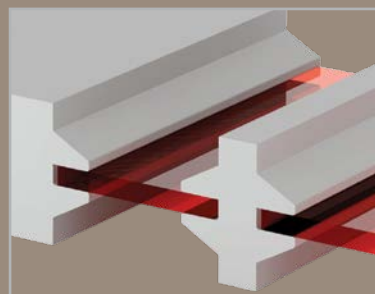
SQUARE STICK SASH (SS)



SQUARE STICK COMPRESSION FIT (SS)



QUARTER BEAD SASH (QB)



BEVEL SASH (BV)

Glass panel options

Glass panels can often offer your door a visual aesthetic that wood doors cannot accomplish alone. Whether you're considering tinted or textured glass, or something with a more distinctive look, such as resin panels or cast glass, we can create the style you're searching for. Consult with our experts to find the perfect balance of natural light and privacy that your project demands.

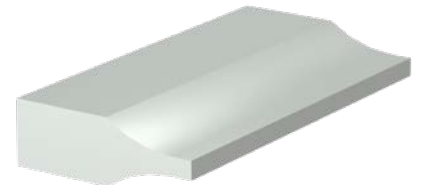
RAISED (R)



DOUBLE HIP (D)



SCOOP (S)



JUNIOR BEVEL (JR)



FLAT (F)



SENIOR RAISED (SR)



Standard glass options



A100
Square Sticking (SS)
Frosted Glass
AC9000B Hardware



CLEAR



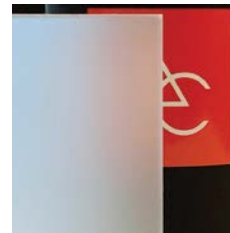
EUROPEAN ETCHED
FIBER



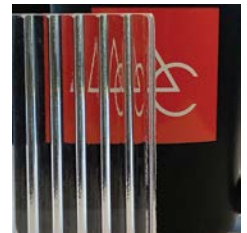
OBSCURE



ANTIQUE



FROSTED



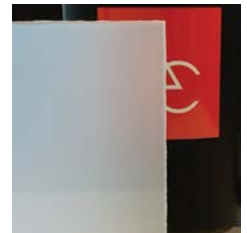
FLUTE LITE
NARROW



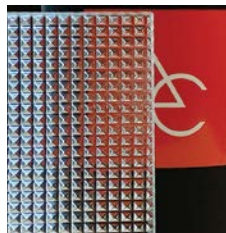
FLUTE LITE
WIDE



FLUTE LITE
GROOVE



WHITE LAMI



QUADRA



RAIN



RIPPLE



WHIRL



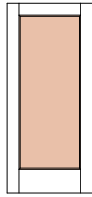
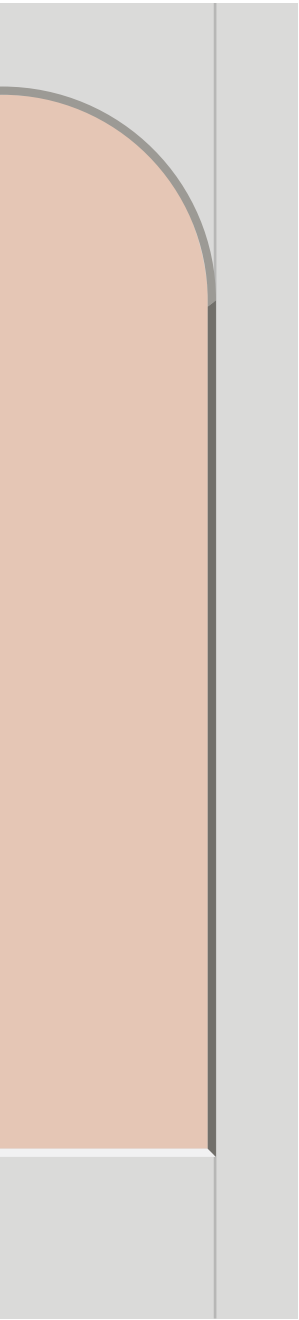
MIRROR



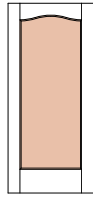
CAPTIVA

Captiva AC / Architectural Concepts Series

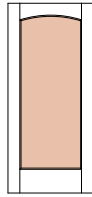
Glass panel doors



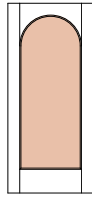
G100



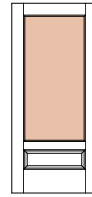
G101



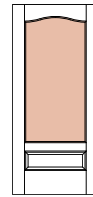
G102



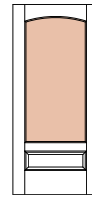
G103



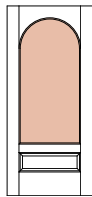
G110



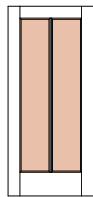
G111



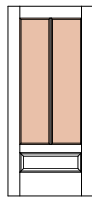
G112



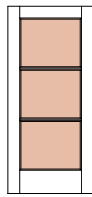
G113



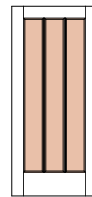
G200



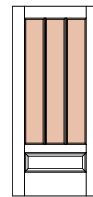
G210



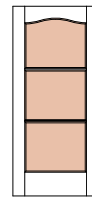
G300



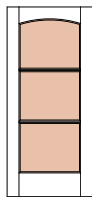
G301



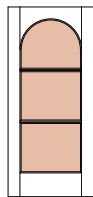
G302



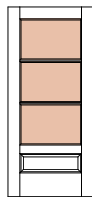
G304



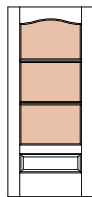
G305



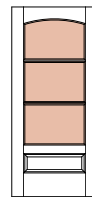
G306



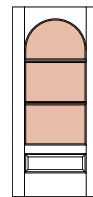
G310



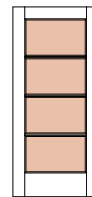
G314



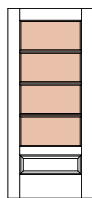
G315



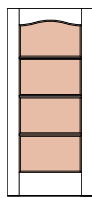
G316



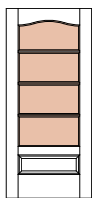
G400



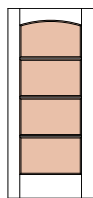
G401



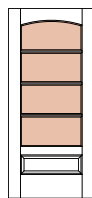
G410



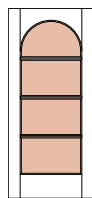
G411



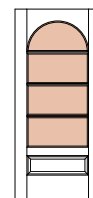
G420



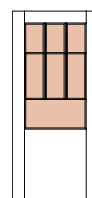
G421



G430



G431



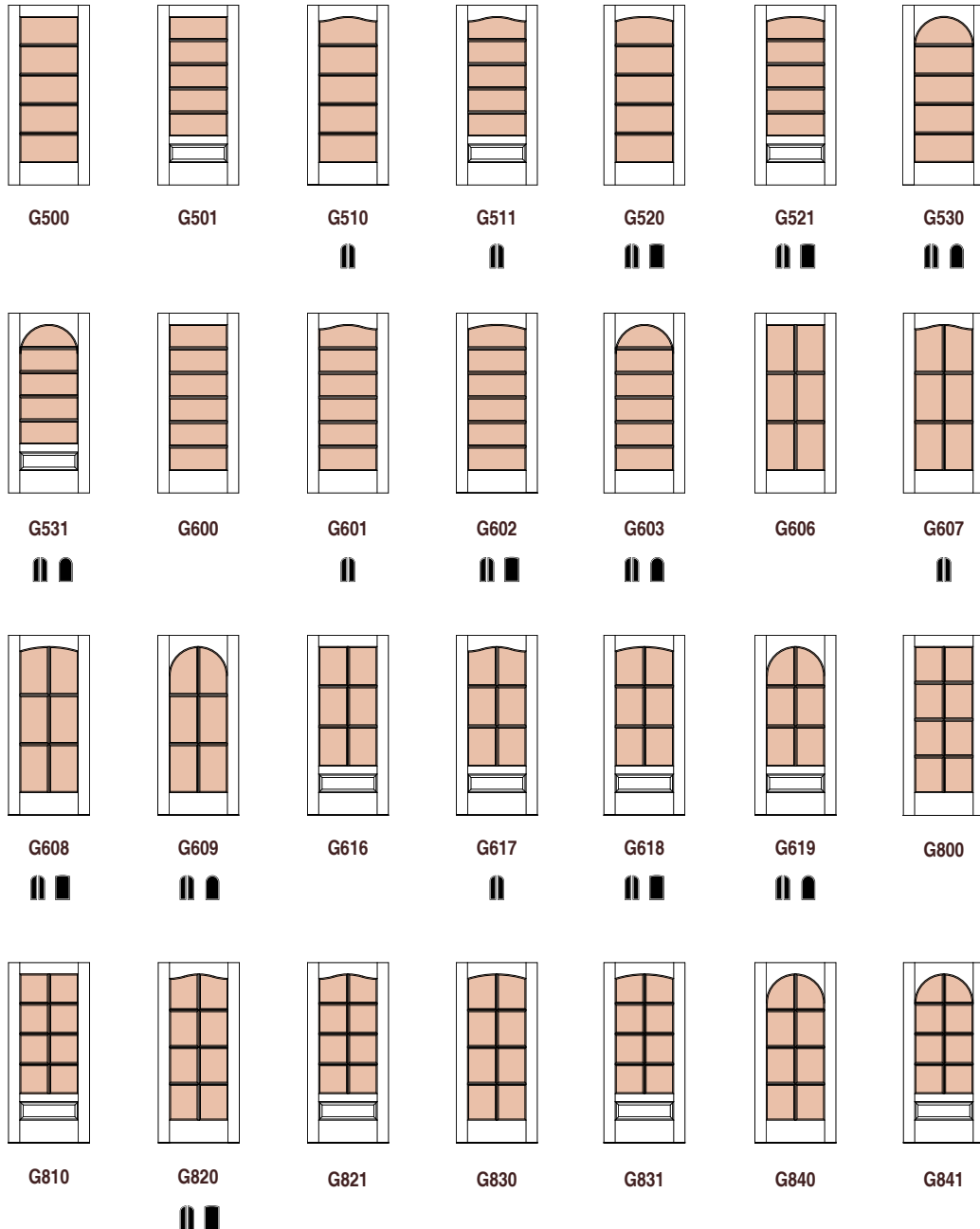
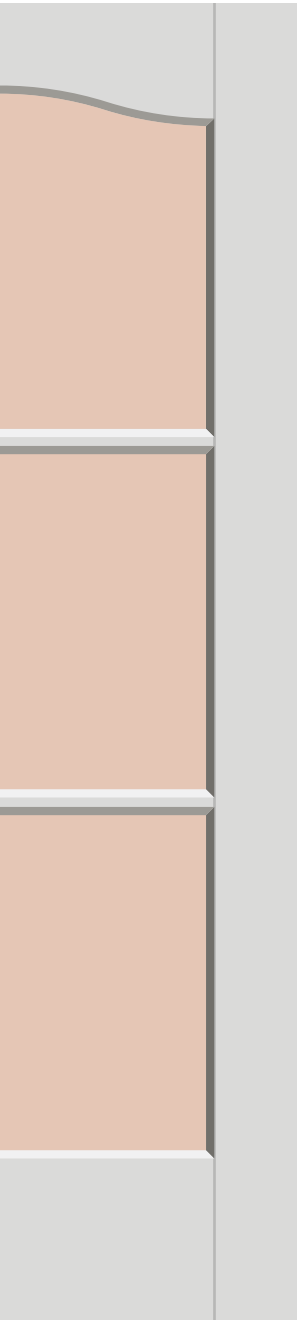
G440



CAPTIVA

Captiva AC / Architectural Concepts Series

Glass panel doors

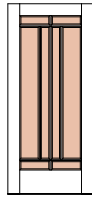




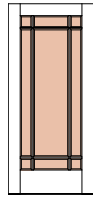
CAPTIVA

Captiva AC / Architectural Concepts Series

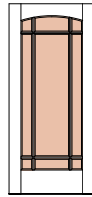
Glass panel doors



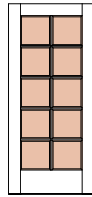
G850



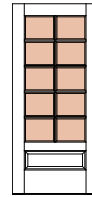
G900



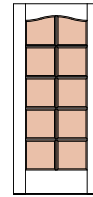
G901



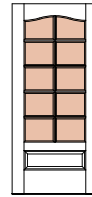
G1000



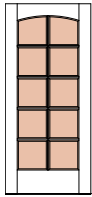
G1001



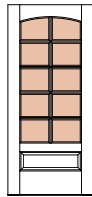
G1010



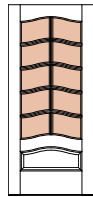
G1011



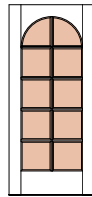
G1020



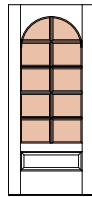
G1021



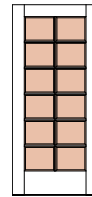
G1030



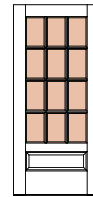
G1040



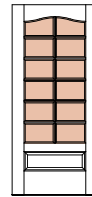
G1041



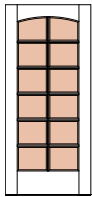
G1200



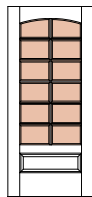
G1210



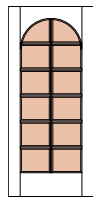
G1221



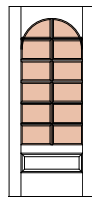
G1230



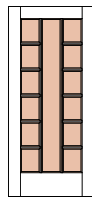
G1231



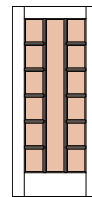
G1240



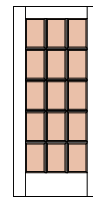
G1241



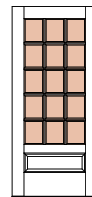
G1250



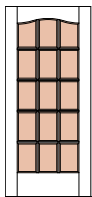
G1300



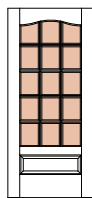
G1500



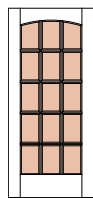
G1501



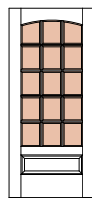
G1510



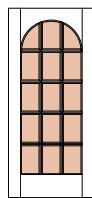
G1511



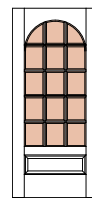
G1520



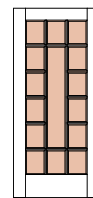
G1521



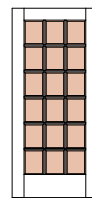
G1530



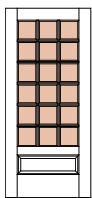
G1531



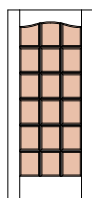
G1540



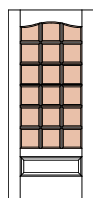
G1800



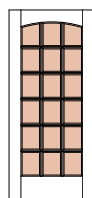
G1801



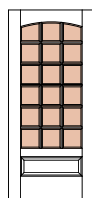
G1810



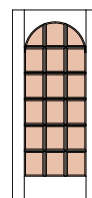
G1811



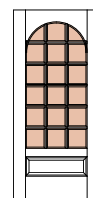
G1820



G1821



G1830



G1831

Panel lite doors



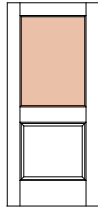
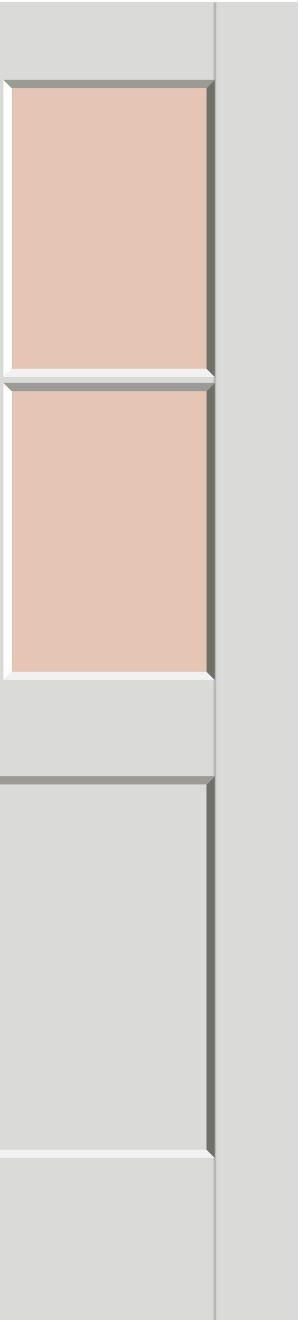
P100
Square Sticking (SS)
1/4" Frosted Glass
AC9000 B Hardware
Matte Black



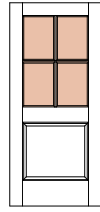
CAPTIVA

Captiva AC / Architectural Concepts Series

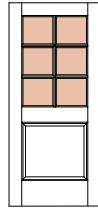
Panel lite doors



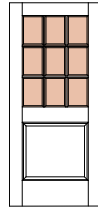
P100



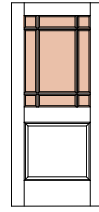
P104



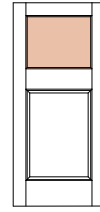
P106



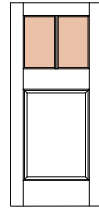
P109



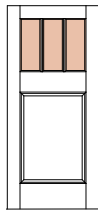
P119



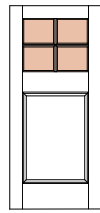
P130



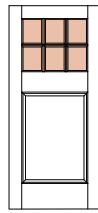
P132



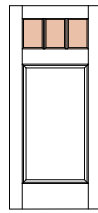
P133



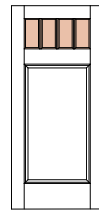
P134



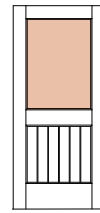
P136



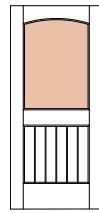
P143



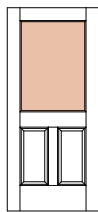
P144



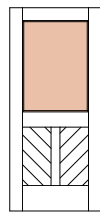
P145



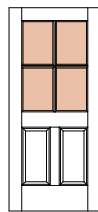
P146



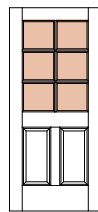
P200



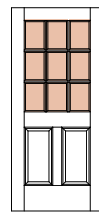
P202



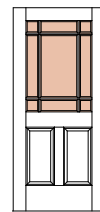
P204



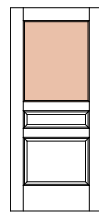
P206



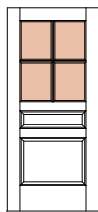
P209



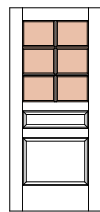
P219



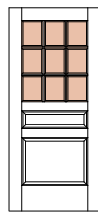
P220



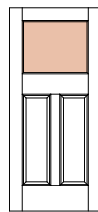
P224



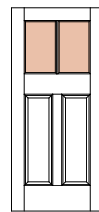
P226



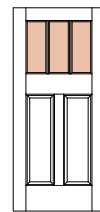
P229



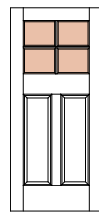
P230



P232



P233



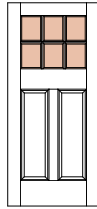
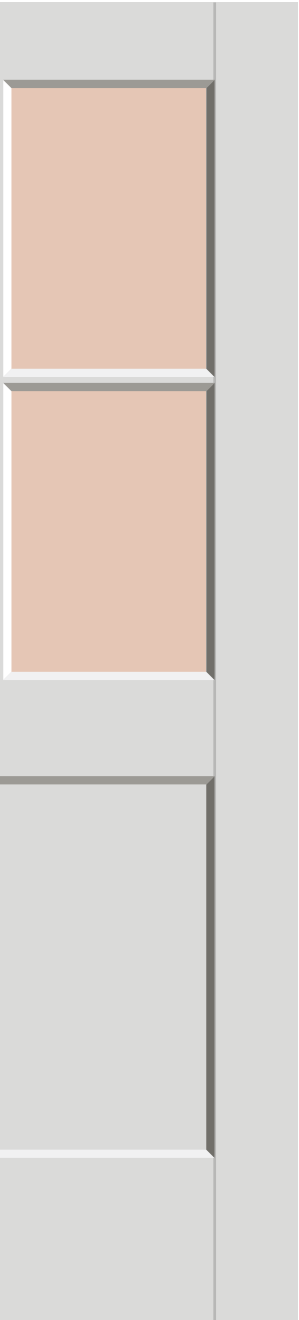
P234



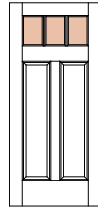
CAPTIVA

Captiva AC / Architectural Concepts Series

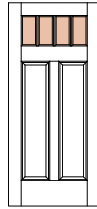
Panel lite doors



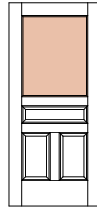
P236



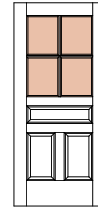
P243



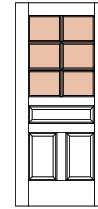
P244



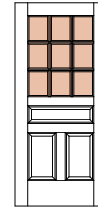
P300



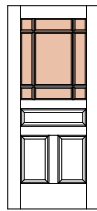
P304



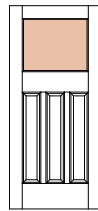
P306



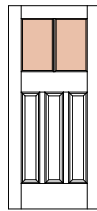
P309



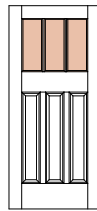
P319



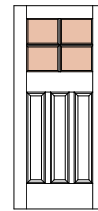
P330



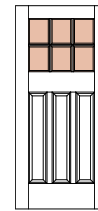
P332



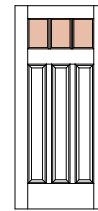
P333



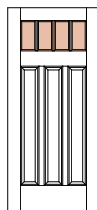
P334



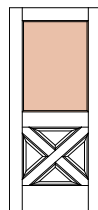
P336



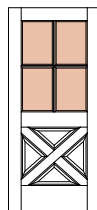
P343



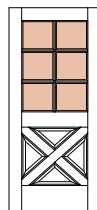
P344



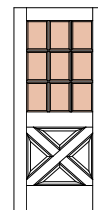
P400



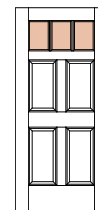
P404



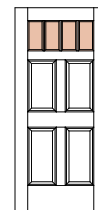
P406



P409



P443



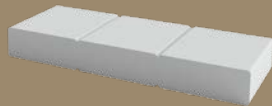
P444

V-Groove series profile options

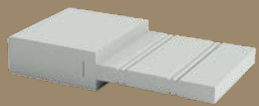
For the classic look of a plank door, we recommend our V-Groove Series doors. Although built with the solidness of a stile-and-rail construction, each V-Groove door features a precision carved tongue-and-groove that gives the rustic appearance of a plank-style door.



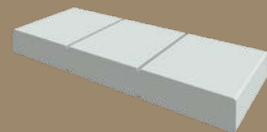
STANDARD V-GROOVE
PROFILE



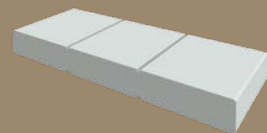
STANDARD V-GROOVE FLUSH
PROFILE



BEADED V-GROOVE PROFILE



U-GROOVE FLUSH PROFILE



SQUARE GROOVE FLUSH
PROFILE



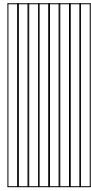
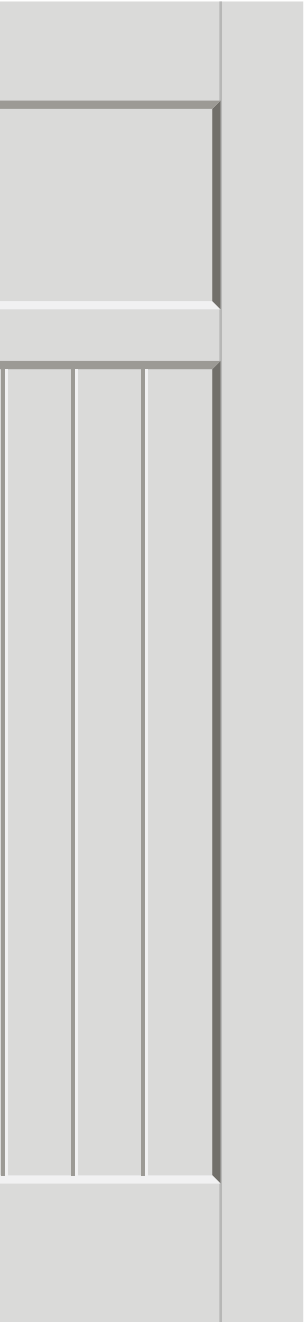
Custom V100
U-Groove MDF
AC4251 Flush Pull
AC9000B Barn Door Track



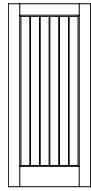
CAPTIVA

Captiva AC / Architectural Concepts Series

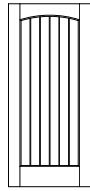
V-Groove doors



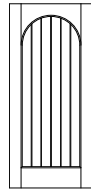
V100



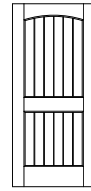
V101



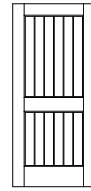
V103



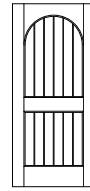
V104



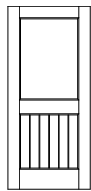
V202



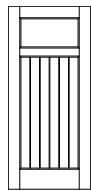
V203



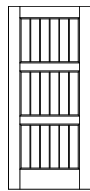
V207



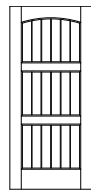
V210



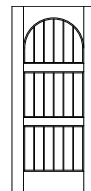
V215



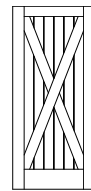
V300



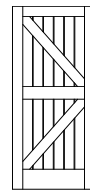
V302



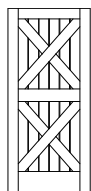
V303



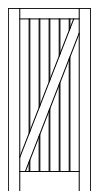
V401



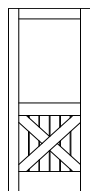
V403



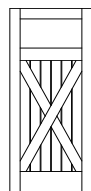
V404



V405



V410



V415

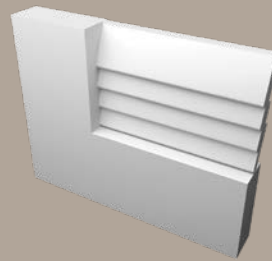


Louver door collection

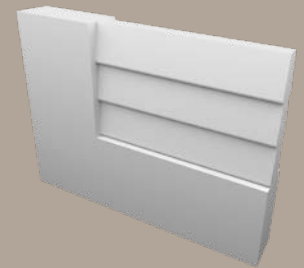
Our striking louver doors provide not only unique style options, from traditional plantation style to coastal contemporary, but also serve a functional purpose as well, by offering both privacy and the airflow needed for certain rooms and spaces. Our louver panels are available in both vented and false configurations and can be added to most of our panel doors.



L100
False Louver

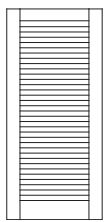


VENTED LOUVER

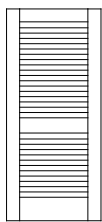


FALSE LOUVER

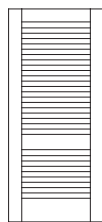
Louver doors



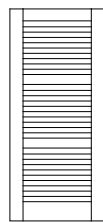
L100



L202



L206



L300



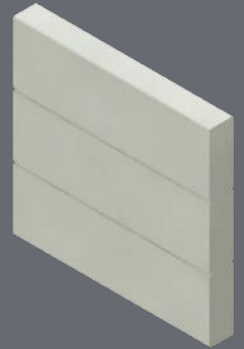
L206
Vented Louver
Stained Cherry

Custom flush doors

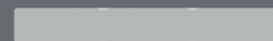
Our flush modern doors offer a sturdy, functional option for certain applications and aesthetic needs. Every one of our flush doors is engineered to resist warping and twisting. You can select from a wide variety of wood species or paint grade MDF to finish out your flush door. Depending on the size, most of our flush doors can be quite heavy. To reduce the weight, you can choose to add a tubular core, which reduces the weight but maintains the structural stability. For extremely large doors, inquire about our aluminum honeycomb construction.



1/2" STAINLESS INLAY



SQUARE GROOVE



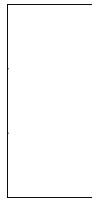
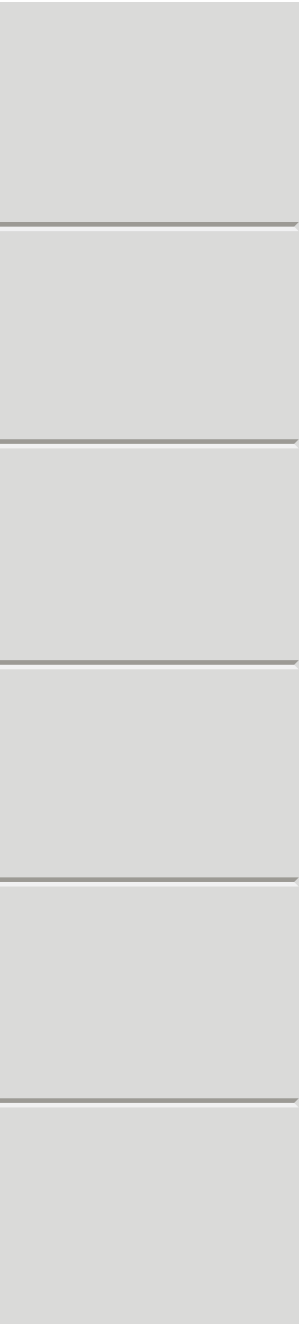
F501
Stainless Inlay



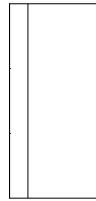
CAPTIVA

Captiva AC / Architectural Concepts Series

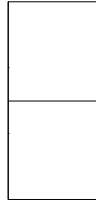
Custom flush doors



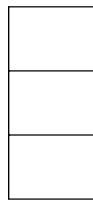
F100



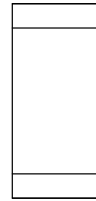
F101



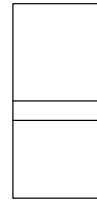
F200



F300



F308



F310



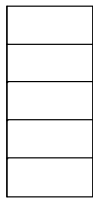
F400



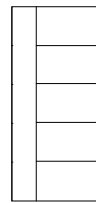
F408



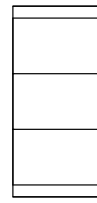
F410



F500



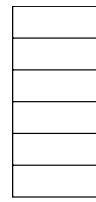
F501



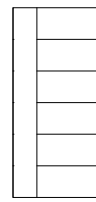
F508



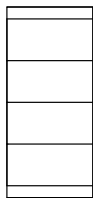
F510



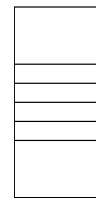
F600



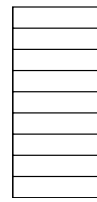
F601



F608



F610



F900

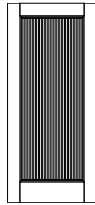




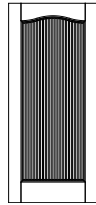
CAPTIVA

Captiva AC / Architectural Concepts Series

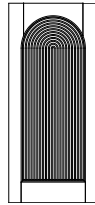
Tambour doors



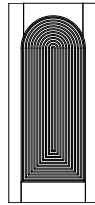
T100



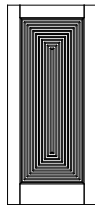
T101



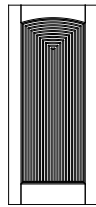
T103



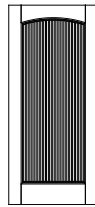
T104



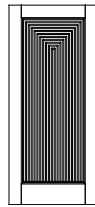
T105



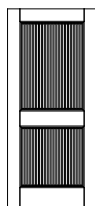
T107



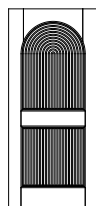
T108



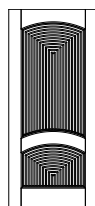
T109



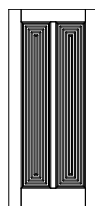
T120



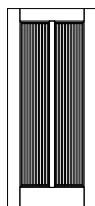
T201



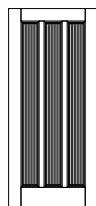
T203



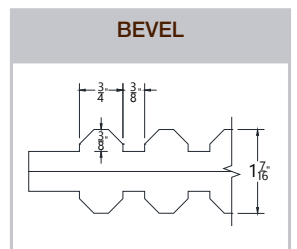
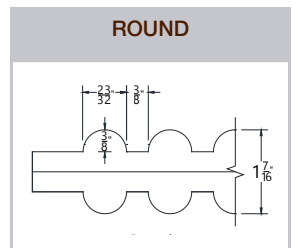
T205



T208



T300



Fire-rated doors



YOU CAN FOCUS ON A PROPER FIRE PROTECTION SYSTEM AND YOUR DESIGN VISION WHEN SELECTING ONE OF OUR FIRE-RATED DOORS. EACH DOOR, AVAILABLE IN FIRE RATINGS OF 20-, 45-, 60- AND 90-MINUTES, IS CAREFULLY DESIGNED TO MATCH ANY OF OUR NON-RATED DOORS, PROVIDING YOU ARCHITECTURAL CONSISTENCY AND PEACE OF MIND.

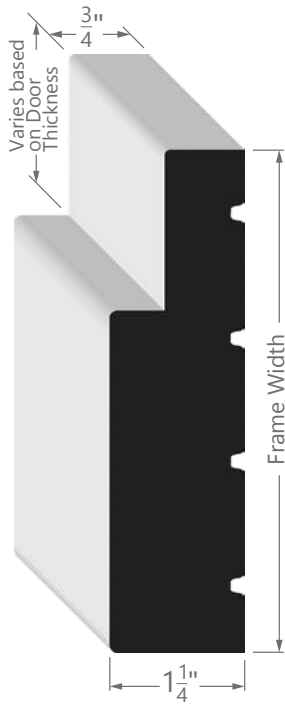


	20-Minute MDF	20-Minute Wood	45- and 60-Minute MDF	90-Minute MDF
Category	Category A Category B Neutral Pressure	Category A Category B Neutral Pressure	Category A	Category A
Thickness	1-3/4" minimum	1-3/4" minimum	1-3/4" minimum	1-3/4" minimum
Maximum Width Single	4'0"	4'0"	4'0"	4'0"
Maximum Width Pair	8'0"	8'0"	7'0"	6'0"
Maximum Height	8'0"	8'0"	8'0"	8'0"
Fire Glass Max. Area	2,656 sq. inches	2,656 sq. inches	1,248 sq. inches (45 min.) 100 sq. in. - Matching sticking (60 min.) 1,296 sq. in. with vision kit	100 sq. in. - matching sticking 1,080 sq. in. with vision kit
Standards	ASTM E-152, NFPA 80, NFPA 252 (2017), UL10B, UL10C, CAN/ULC S104 (2015)			

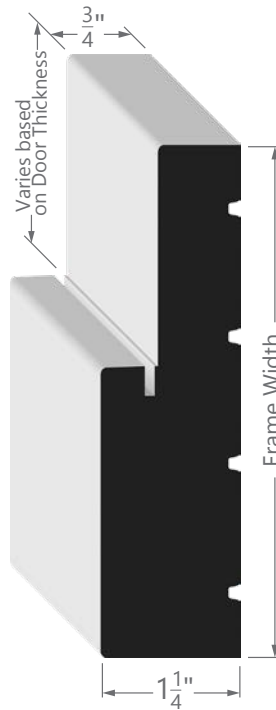
Wood Frames and Jambs

WE OFFER PRIMED FINGER JOINT FLAT JAMBS WITH APPLIED STOP AND SINGLE RABBETED FRAMES ALL MACHINED TO YOUR HARDWARE SPECIFICATIONS AND SHIPPED KD (KNOCK DOWN).

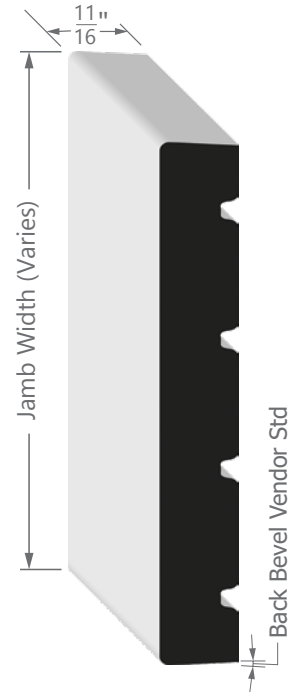
Single Rabbeted Frame



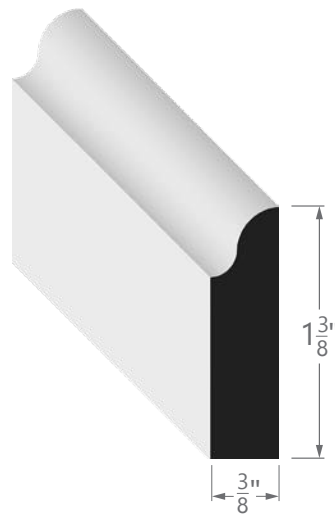
Single Rabbeted Frame with Kerf



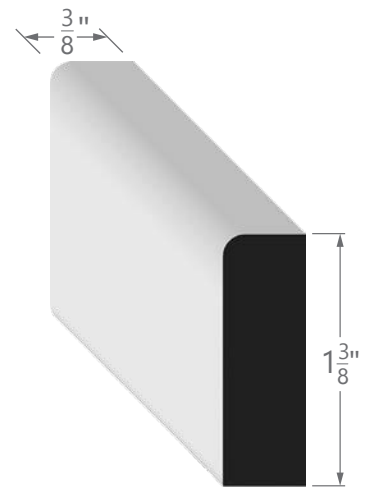
Flat Interior Jamb



OG Door Stop



1 RE Door Stop



AC STC Ratings

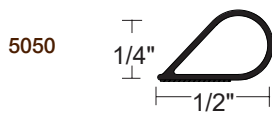
Sound Transmission Class (STC) Rating for Doors determines how successful it will be at blocking the movement of sound. Architectural Concepts MDF Doors are initially a good sound reducer, however, the door is just one piece of the equation. It is important to use the proper acoustical gasketing combinations to seal the gaps around the perimeter of the door opening. The gasketing combinations we list below, when tested with our doors, achieved a zero drop-off in our STC rating. Ultimately, the hardware gasketing and perimeter sealing determine the sound rating that a door achieves.

Our MDF Doors have been tested with hardware packages from National Guard Products in the following chart. All of these ratings are for operable single swing doors with the sound control hardware specified on the right-hand side of the table.

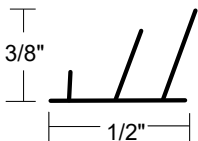
STC Ratings

Door Styles	STC Rating	Door Thickness	National Guard Products (NGP) Hardware Used:		
			Primary Seal	Threshold Saddle	Door Bottom
A100 - A200 Square Sticking (SS) Flat panel (F)	32	1-3/4"	5050 Twin Row	8144 (optional)	12T6
A100 - A200 Square Sticking (SS) Raised panel (R)	34		-or-	-or-	-or-
A300 - A900 Square Sticking (SS) Flat panel (F)	33		5075	896S-ADJ	225S x STC2
A300 - A900 Square Sticking (SS) Raised panel (R)	35				

NGP Primary Seals



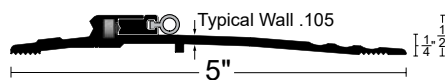
5075



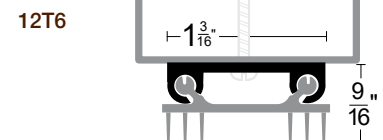
NGP Threshold Saddle



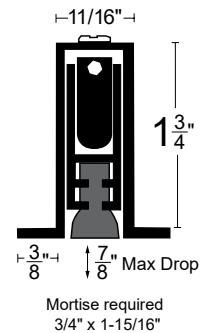
896S-ADJ



NGP Door Bottom



225S x STC2



Acoustical testing to ASTM E90 Standard Test Method for Measurement of Airborne Sound Transmission Loss of Building Partitions and Elements, ASTM E2235 Standard Test Method for Determination of Decay Rates for use in Sound Insulation Test Methods, and ASTM E1332 Standard Classification for Rating Outdoor - Indoor Sound Attenuation. The sound transmission class (STC) was calculated in accordance with ASTM E413 Classification for Rating Sound Insulation.

Hardware

A WIDE VARIETY OF BARN DOOR TRACK, HARDWARE SETS, AND PULLS ARE AVAILABLE.

ACZL1515



AC4251



ACMO6312



AC5310



AC5324



AC5336



Pulls Come in Several Finishes

- Polished Stainless
- Satin Stainless
- Bronze Powder coat
- Black Powder coat

ACMO6312 Pull
Satin Stainless



AC Hinges come in Several Finishes

- Polished Chrome
- Satin Chrome
- Satin Nickel
- Oil Rubbed Bronze

AC .134 Ball Bearing Hinges in Stock

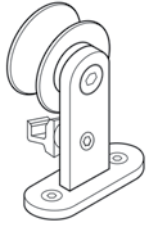
- 3-1/2" x 3-1/2" SQ Corner
- 4" x 4" SQ Corner
- 4-1/2" x 4-1/2" SQ Corner



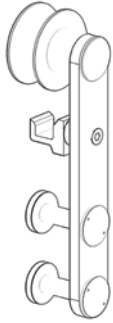
AC5310 Pull
Satin Stainless

Barn door track

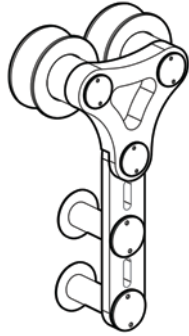
AC9000 A



AC9000 B



AC9000 C

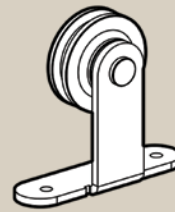


AC9000 B Hardware
Polished Stainless

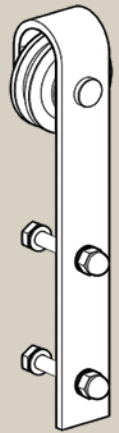


A202
Square Sticking (SS)
F Panel (F)

AC8000 A



AC8000 B



AC8000 A Hardware
Black Powder coat



CAPTIVA

WWW.CAPTIVACUSTOM.COM

508.235.4390



CAPTIVA IS A BRAND OF NORTH ATLANTIC CORP.



Learn about our other MDF Doors:



Captiva Custom MDF Doors
captivacustom.com



Cleary C Series MDF Doors
clearywholesale.com